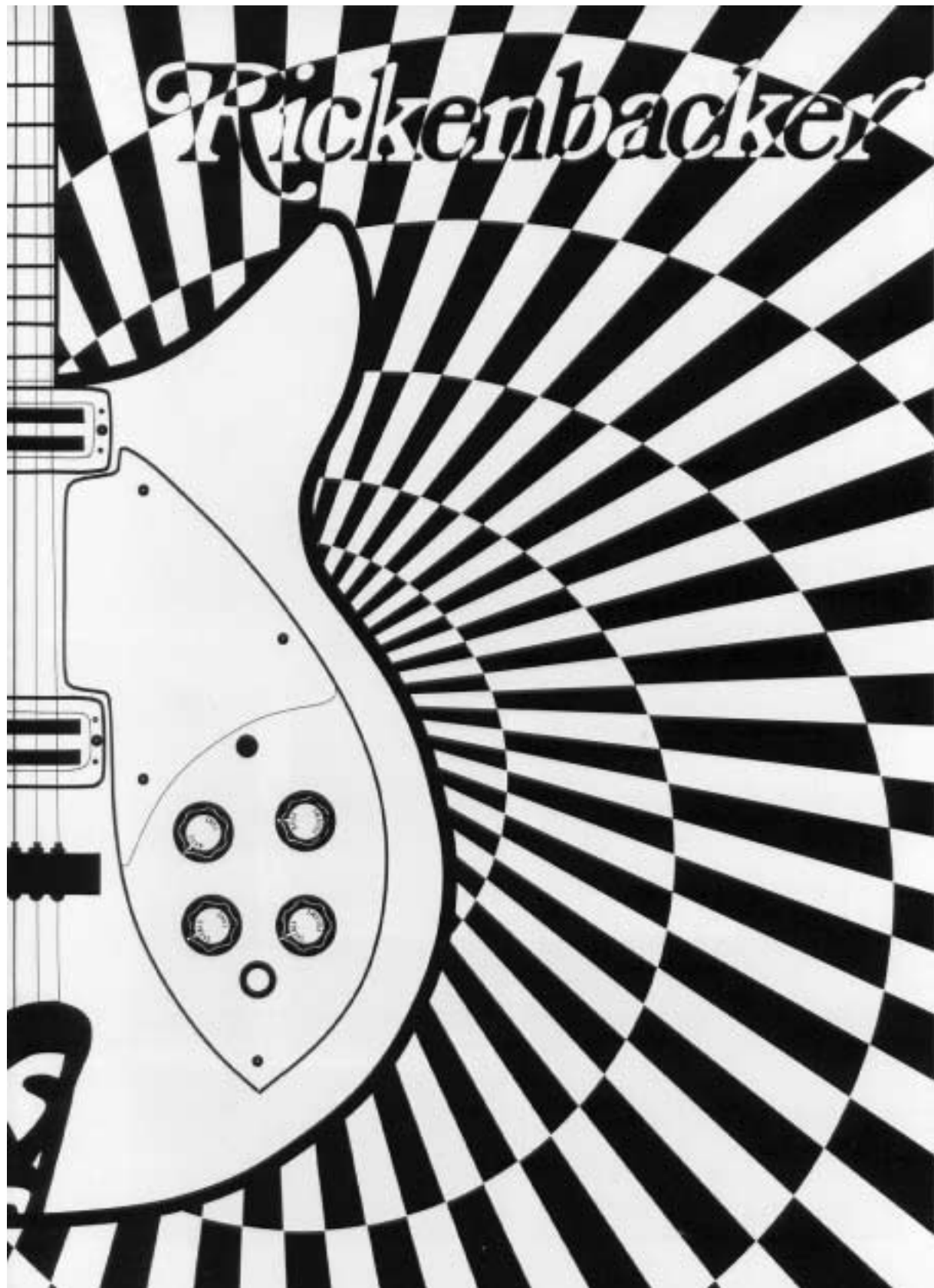
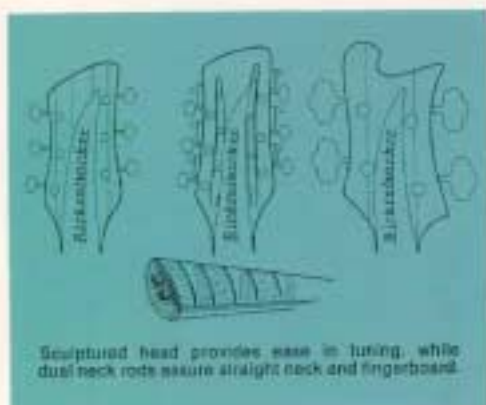
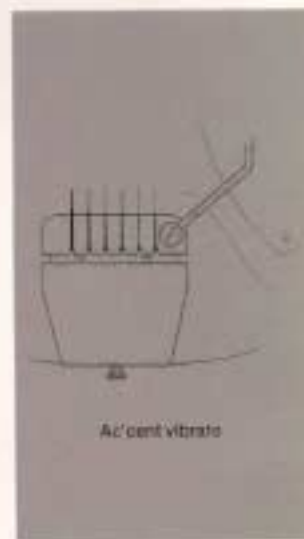
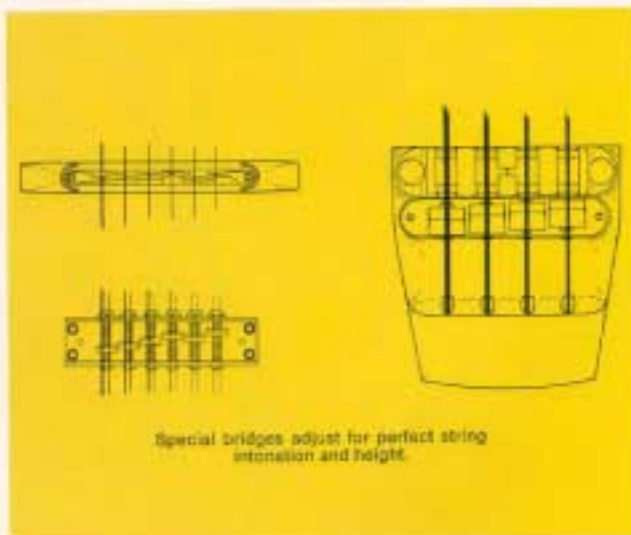


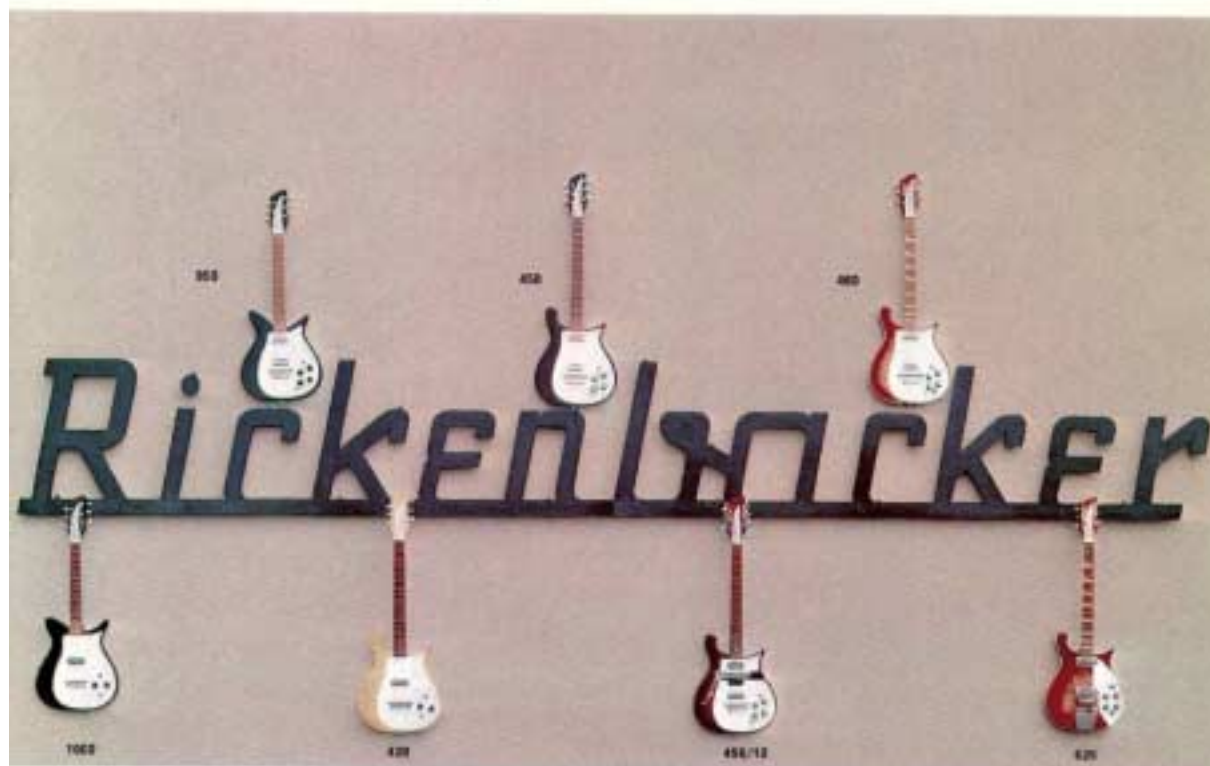
*Rickenbacker*



# Guitar and Bass Features



# Solid Body Series



## MODELS 420-1000

Rickenbacker Solid Body guitars have long been recognized as the finest instruments of this design. Structural rigidity and functional design characterizes the Combo Series fine craftsmanship. The neck is an integral part of the instrument as it extends from head to tailpiece. String tension is not transferred to the body, assuring perfect neck alignment. Models 420-460 comprise the full size series. These models offer a complete selection of six string, twelve string, and six-twelve convertible guitars. Models 615 and 625 provide the ultimate in Solid Body performance, featuring advanced circuitry and Ac'cent vibrato. Model 625 is wired for Rick-O-Sound stereo, and has a bound body and neck, while the Brazilian Rosewood fingerboard has Mother of Pearl fret-markers. Models 900-1000 are three-fourths models, allowing extra fingering ease and compactness. Suitable for student use, these models have enhanced many top recordings with a truly forceful sound. All models feature precision-sound Rickenbacker pickups, matched to each model with special electronics. All instruments in this series are available in natural grain Fireglo and Maple-glo; Solid color Azureglo, Burgundy-glo, and Jetglo.

Model	Solid Body	No. of Pickups	No. of Strings	6-12 Converter	Short Scale	Full Scale	No. of Frets	No. of Neck Rods	Fiberglass	Rocker Bridge	Roller Bridge	Full Canopy	Tone Controls	Volume Controls	Stereo Output	Adj. Pickguard	Bound Body	Bound Neck	Ivory Nut	Fret Inlays	Slit Head	Tone Switch	Bridge Ads	Thin Neck		
420	●	1	6			●	21	2		●			1	1									●	2	●	
425	●	1	6			●	21	2	●				1	1										●	2	●
450	●	2	6			●	21	2					2	2										●	2	●
450/12	●	2	12			●	21	2					2	2										●	2	●
456/12	●	2	12	●		●	20	2					2	2										●	2	●
460	●	2	6			●	21	2					2	2			●	●						●	2	●
615	●	2	6			●	20	2	●				2	2										●	10	●
625	●	2	6			●	21	2	●				2	2	●	●	●	●	●	●				●	10	●
900	●	1	6		●		21	2		●			1	1										●	2	●
950	●	2	6		●		21	2					2	2										●	2	●
1000	●	1	6		●		18	2		●			1	1										●	2	●

# Standard Thin Body Series



310

315

## MODELS 310-325

Models 310-325 offer full sound in a three-quarters size design. The short scale and proportionately smaller body offer the musician extreme speed and versatility. Low string tension, plus a fast, thin neck allows incredible fretting maneuverability. The light-weight hollow body provides the maximum of playing ease and tonal variation. Precision machined parts, heavily chrome plated, insure perfect operation for the perfect sound. A six-way adjustable bridge, plus individual string saddles guarantee perfect intonation and string height. Rickenbacker custom pickups are matched to the unique five control-one switch electronic circuit. Two tone controls and two volume controls are mated with the instantaneous tone selector by means of the master mixer, allowing the musician to preselect a predictable tone for instant use at any time. The output jack is mounted on the side of the instrument, thus eliminating any playing interference from a projecting plug. All models are available in natural grain Fireglo and Maple, Solid color Azareglo, Burgundyglo, and Janylo. All finishes are super-buffed, complimenting the fine Maple body and Brazilian Rosewood fingerboard. The Rickenbacker Ac'cent vibrato is featured on Models 315 and 325.

Model	Hollow Body	Short Scale	Small Body	No. of Pickups	No. of Frets	Vibrato	Roller Bridge	Volume Controls	Tone Controls	String Saddles	1/2" Tailpiece	Adj. Pickguard	Pre Amp	Janylo	Maple Body	1" Neck	Thin Neck	Light Body	Rosewood	Fretboard
310	●	●	●	2	21	●	●	2	2	●	●	●	●	●	●	●	●	●	●	●
315	●	●	●	2	21	●	●	2	2	●	●	●	●	●	●	●	●	●	●	●
320	●	●	●	2	21	●	●	2	2	●	●	●	●	●	●	●	●	●	●	●
325	●	●	●	2	21	●	●	2	2	●	●	●	●	●	●	●	●	●	●	●

## MODELS 330-345

Models 330-345 offer the serious guitarist a full range of basic instruments. These Semi-acoustics feature two piece body construction, accented with a handsome tailpiece bevel. Superb craftsmanship marks this traditional Rickenbacker full-contour body style. An incredibly thin neck allows precise, rapid fingering. Custom five control-one switch electronics is matched to the exclusive Rickenbacker pickups. The precision adjustable bridge features individual string saddles, producing correct intonation and tonal clarity. Model 330-12 has twelve strings, providing a full and rich sound. Model 336-12 is a further refinement of twelve-string design. This model allows the musician to shift from twelve to six strings in any number between. Models 335 and 345 feature the Rickenbacker Ac'cent vibrato. All models available in natural grain Fireglo and Maple, Solid color Azareglo, Burgundyglo, and Janylo.

Model	Hollow Body	No. of Pickups	No. of Frets	Vibrato	Roller Bridge	No. of Strings	6-12 Converter	Volume Controls	Tone Controls	Bridge Ads.	String Saddles	1/2" Tailpiece	Adj. Pickguard	Master Mixer	Pre Amp	Maple Body	Full Contour	Thin Neck	Rosewood	Fretboard
330	●	2	21	●	●	6	●	2	2	10	●	●	●	●	●	●	●	●	●	●
330-12	●	2	21	●	●	12	●	2	2	10	●	●	●	●	●	●	●	●	●	●
335	●	2	21	●	●	6	●	2	2	10	●	●	●	●	●	●	●	●	●	●
336-12	●	2	21	●	●	12	●	2	2	10	●	●	●	●	●	●	●	●	●	●
340	●	2	21	●	●	6	●	2	2	10	●	●	●	●	●	●	●	●	●	●
345	●	2	21	●	●	6	●	2	2	10	●	●	●	●	●	●	●	●	●	●



330

330-12

335-12

340

# Deluxe Thin Body Series



360                      360-12                      375                      366-12

## MODELS 360-375

The Deluxe Semi-acoustic Series has long been a world standard for comparison. The unique body features traditional Rickenbacker styling, combined with exquisite craftsmanship. All models have hand bound bodies and necks, allowing ease and comfort in playing. Mother of Pearl fret markers grace the imported Rosewood fingerboard. Every machine-precision metal part is plated with an extremely durable chrome finish. The world famous Rickenbacker pickup is matched with special, balanced circuitry, including Rick-O-Sound Stereo output. All of these features are encompassed in a body of specially selected, seasoned Maple, complemented by a high-polish custom finish. Fireglo and Mapleglo colors allow the woodgrain to show, including the five piece walnut-laminated Maple neck and head. All models available in Jetglo, Burgundyglo, and Azureglo at no additional cost. These Deluxe models are also available with binding on both sides of the body at no extra cost, but on special order only.

Model	Mellow Body	No. of Pickups	No. of Frets	Vibrato	Roller Bridge	No. of Strings	6-12 Cassette	Volume Control	Tone Control	Master Mixer	Stereo Output	Bridge Add.	String Saddles	1/2" Tailpiece	1/4" Pickup	Ivory Nut	Fret Inlays	Bound Neck	Bound Body
360	●	2	21	●	●	6	2	2	●	●	●	10	●	●	●	●	●	●	●
360-12	●	2	21	●	●	12	2	2	●	●	●	10	●	●	●	●	●	●	●
366-12	●	2	21	●	●	12	2	2	●	●	●	10	●	●	●	●	●	●	●
365	●	2	21	●	●	6	2	2	●	●	●	10	●	●	●	●	●	●	●
370	●	3	21	●	●	6	2	2	●	●	●	10	●	●	●	●	●	●	●
375	●	3	21	●	●	6	2	2	●	●	●	10	●	●	●	●	●	●	●

## MODELS 360F-370F

The Deluxe Semi-acoustic Full Body Series brings new highlights to a guitar design, accepted for hundreds of years. The mellow sound of a true acoustic can be contrasted with solid treble sounds, all within one instrument. Shaped to appeal to the traditional guitarist, this series incorporates features appealing to all guitarists. Both sides of the Maple body and the Walnut-laminated Maple neck are hand bound with handsome white binding. Mother of Pearl fret inlays adorn the Brazilian Rosewood fingerboard. All metal parts are heavily chromed for maximum wear and beauty. Rickenbacker custom circuitry gives this instrument precise, controllable sound. Five variable controls match the instrument to any amplifier, and a convenient switch allows instantaneous tone change. This instrument is available in natural grain Fireglo and Mapleglo, Solid color Azureglo, Jetglo, and Burgundyglo. The optional Rickenbacker Ac-cent vibrato provides a nuance of true-pitch variation. Rick-O-Sound output is standard on this series, allowing a true stereo sound.

Model	Mellow Body	No. of Pickups	No. of Frets	Vibrato	Roller Bridge	Volume Controls	Tone Controls	Master Mixer	Stereo Output	Bridge Add.	String Saddles	1/2" Tailpiece	1/4" Pickup	Ac-cent Vibrato	Ivory Nut	Fret Inlays	Bound Neck	Bound Body	Maple Body	No. of Neck Body
360F	●	2	21	●	●	2	2	●	●	●	10	●	●	●	●	●	●	●	●	2
365F	●	2	21	●	●	2	2	●	●	●	10	●	●	●	●	●	●	●	●	2
370F	●	3	21	●	●	2	2	●	●	●	10	●	●	●	●	●	●	●	●	2
375F	●	3	21	●	●	2	2	●	●	●	10	●	●	●	●	●	●	●	●	2



# Deep Body Acoustic



381

380

385

390

392

## MODELS 380-394

The 380-394 series of Custom Deep Body guitars reflect world famous Rickenbacker quality and craftsmanship at its peak. Here is a series of guitars to satisfy the most demanding and discriminating guitarist.

Model 380 is a double cutaway with arched and carved top and back. The superb fingerboard, neck, sound hole, and handsomely crafted body feature custom binding.

The guitarist demanding an acoustic with rich wide range tonal performance combining the appearance of a thin hollow body, will find all this and more in the 380.

Model 381 has all the features of the model 380 plus two exclusive Rickenbacker wide-range electric pickups for additional treble and bass tone accent. The musician in true tune is provided the guitarist with the Rickenbacker metallic shield which protects the pickup from electrical interference.

Model 385 is an exquisite jumbo auditorium flat-top Western and Folk model. Rich resonance and dramatic tonal power make this a popular all-around performer. Neck is fully adjustable with two exclusive double reinforcing rods, permitting either side of neck to be adjusted individually. Fast, superb fingerboard, body, and sound hole are attractively bound. A sculptured pinned bridge covers a choice select Spruce sounding board, resting on a Maple back. Available in Autumn-glo or Maple-glo finish.

Model 386 is the same fine quality guitar as Model 385 except that it has two exclusive Rickenbacker wide-range pickups and successfully combines the deep, richly resonant and dramatic tonal power of the jumbo auditorium flat-top acoustic with the tonal response and tonal flexibility of the electric guitar. Available in Autumn-glo or Maple-glo finish.

Model 390, 391, and 392 represent the ultimate in meticulous guitar craftsmanship, quality materials, and dedication to detail that is the hallmark of all Rickenbacker guitars.

Model 390 is a concert size non-electric featuring custom styling with fully arched, beautifully carved top and back with an adjustable bridge. With Custom-bound superb neck, head, sound holes, and top and back of body, this beautiful instrument combines brilliant treble, rich middle scale, and resonating full bass. This is a superb instrument for the plectrum soloist or folk music performer. The beauty of finish matches the rich sound.

Model 391 is the same magnificent guitar with the addition of two wide-range Rickenbacker electric pickups adding the additional tonal response and flexibility characteristic of the electric guitar.

Model 392 is identical to Model 391 but offers the addition of a vibrato unit.





Rickenbacker Transonic Sound Systems are designed to reproduce every tonal nuance of the Rickenbacker guitar. Transonic Sound Systems are manufactured with the workmanship and overall quality that has made Rickenbacker THE WORLD'S MOST DISTINGUISHED NAME IN GUITARS, AMPLIFIERS, AND ACCESSORIES.



*Rickenbacker Inc.*

201 East Stevens Street/P.O. Box 2275/Santa Ana, Calif. 92707

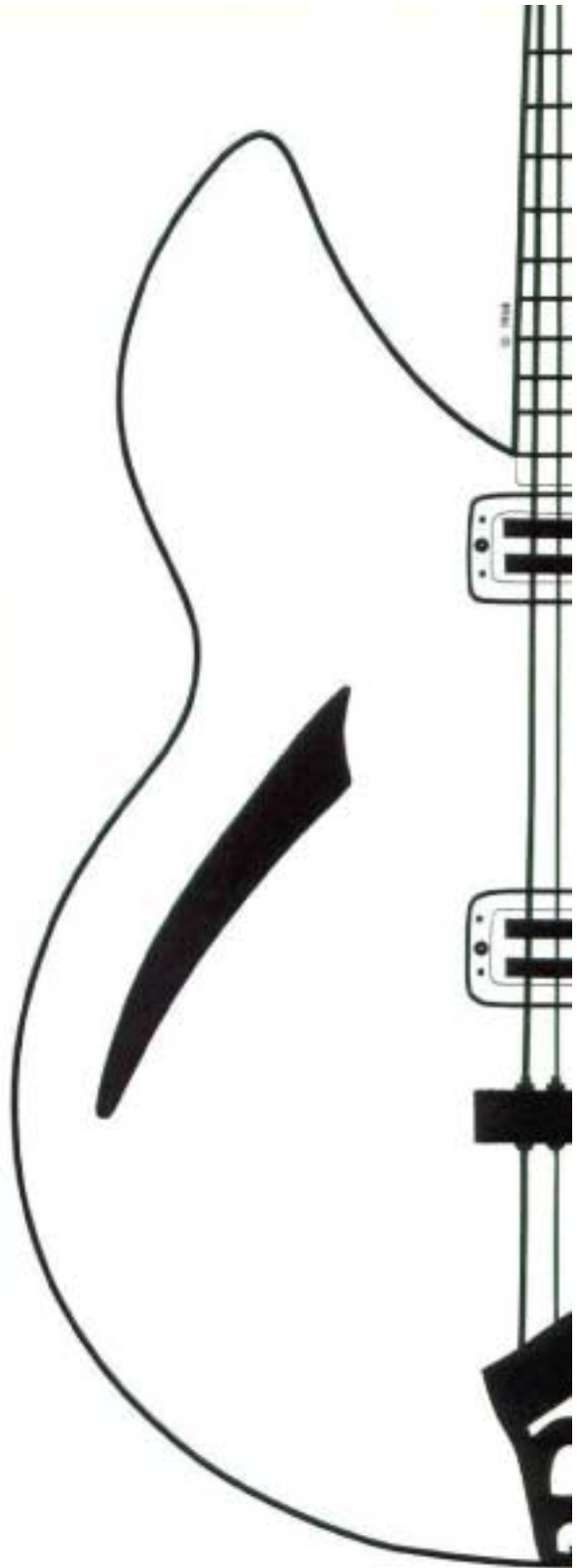


FIG. 888

Model 330